

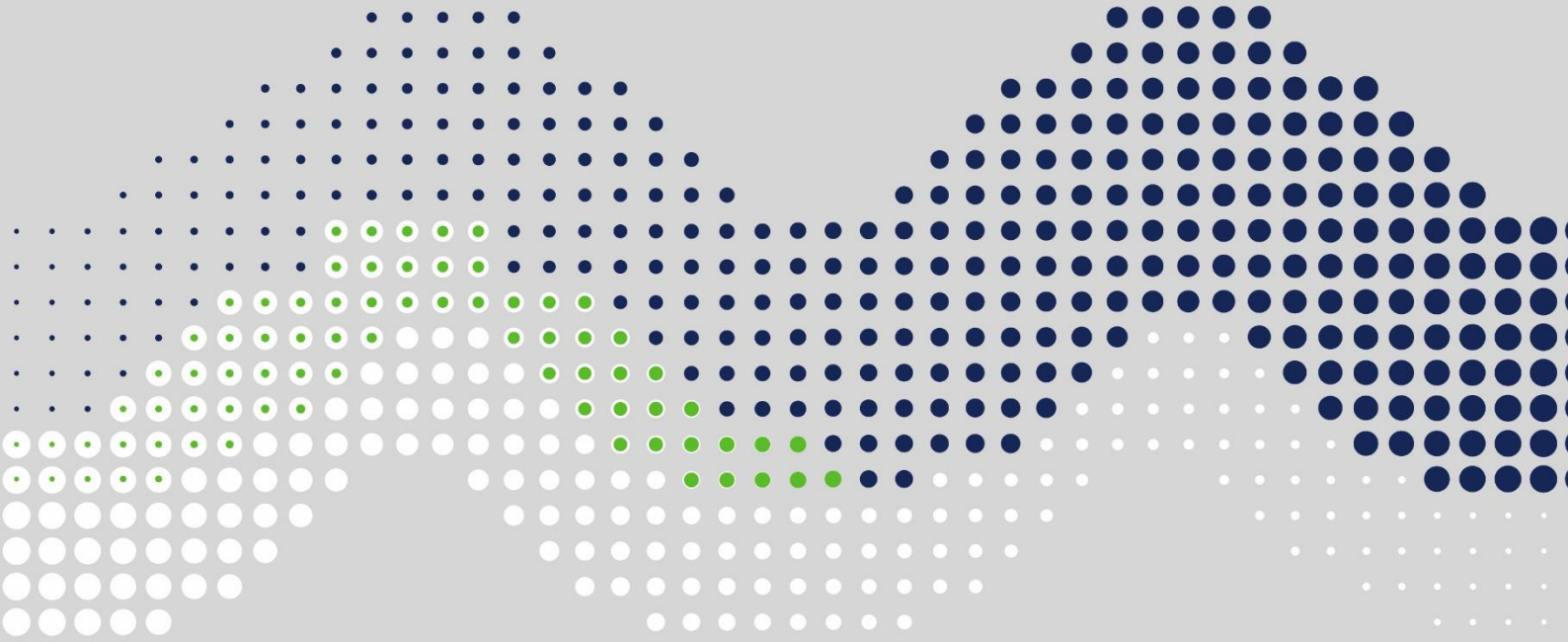


# DM

||||| SERIES |||||

## SuperCap Fail-safe

Electric Valve Actuator



## Electrical Data



SUN YEH ELECTRICAL IND. CO., LTD.

## Content

1. DM-20, DM-40, DM-60, 1PH, Class A, B, C.....	1
1.1 12 V AC / DC, On-off and Floating Control, Class A, B.....	1
1.2 12 V AC / DC, Modulating Control, Class C.....	1
1.3 24 V AC / DC, On-off and Floating Control, Class A, B.....	1
1.4 24 V AC / DC, Modulating Control, Class C.....	2
1.5 100 - 240 V AC, On-off and Floating Control, Class A, B.....	2
1.6 100 - 240 V AC, Modulating Control, Class C.....	2
1.7 24 - 240 V AC / 24 - 135 V DC, On-off and Floating Control, Class A, B.....	3
1.8 24 - 240 V AC / 24 - 135 V DC, Modulating Control, Class C.....	3

# 1. DM-20, DM-40, DM-60, 1PH, Class A, B, C

## 1.1 12 V AC / DC, On-off and Floating Control, Class A, B

Model	Torque		Voltage	Motor Power	Power Consumption DC / 60 / 50 Hz	Duty Performance		Running Current DC / 60 / 50 Hz	Motor Run Time DC / 60 / 50 Hz	SuperCap Return Time
	Nm	in-lb		W	W	Cycles / hour	Starts / hour	Amp	Sec / 90°	Sec / 90°
DM-20	20	177	12 V AC / DC	17	21 / 21 / 21	15 (S3-25%)	120 (S3-25%)	1.68 / 2.01 / 2.03	10 / 10 / 10	13
DM-40	40	354	12 V AC / DC	17	27 / 26 / 26			2.17 / 2.53 / 2.56	20 / 20 / 20	28
DM-60	60	531	12 V AC / DC	17	25 / 25 / 25			2.08 / 2.47 / 2.51	30 / 30 / 30	43

● The running current is measured at max. torque.

## 1.2 12 V AC / DC, Modulating Control, Class C

Model	Torque		Voltage	Motor Power	Power Consumption DC / 60 / 50 Hz	Duty Performance	Running Current DC / 60 / 50 Hz	Motor Run Time DC / 60 / 50 Hz	SuperCap Return Time
	Nm	in-lb		W	W	Starts / hour	Amp	Sec / 90°	Sec / 90°
DM-20	20	177	12 V AC / DC	17	21 / 21 / 21	1200 (S3-25%)	1.68 / 2.01 / 2.03	10 / 10 / 10	13
DM-40	40	354	12 V AC / DC	17	27 / 26 / 26		2.17 / 2.53 / 2.56	20 / 20 / 20	28
DM-60	60	531	12 V AC / DC	17	25 / 25 / 25		2.08 / 2.47 / 2.51	30 / 30 / 30	43

● The running current is measured at max. torque.

## 1.3 24 V AC / DC, On-off and Floating Control, Class A, B

Model	Torque		Voltage	Motor Power	Power Consumption DC / 60 / 50 Hz	Duty Performance		Running Current DC / 60 / 50 Hz	Motor Run Time DC / 60 / 50 Hz	SuperCap Return Time
	Nm	in-lb		W	W	Cycles / hour	Starts / hour	Amp	Sec / 90°	Sec / 90°
DM-20	20	177	24 V AC / DC	17	17 / 19 / 19	15 (S3-25%)	120 (S3-25%)	0.69 / 0.94 / 0.95	10 / 10 / 10	13
DM-40	40	354	24 V AC / DC	17	22 / 22 / 23			0.88 / 1.17 / 1.17	20 / 20 / 20	28
DM-60	60	531	24 V AC / DC	17	21 / 22 / 23			0.86 / 1.16 / 1.18	30 / 30 / 30	43

● The running current is measured at max. torque.

**1.4 24 V AC / DC, Modulating Control, Class C**

Model	Torque		Voltage	Motor Power	Power Consumption	Duty Performance		Running Current	Motor Run Time	SuperCap Return Time
	Nm	in-lb		W	DC / 60 / 50 Hz W	Starts / hour		DC / 60 / 50 Hz Amp	DC / 60 / 50 Hz Sec / 90°	Sec / 90°
DM-20	20	177	24 V AC / DC	17	17 / 19 / 19	1200 (S3-25%)		0.69 / 0.94 / 0.95	10 / 10 / 10	13
DM-40	40	354	24 V AC / DC	17	22 / 22 / 23			0.88 / 1.17 / 1.17	20 / 20 / 20	28
DM-60	60	531	24 V AC / DC	17	21 / 22 / 23			0.86 / 1.16 / 1.18	30 / 30 / 30	43

- The running current is measured at max. torque.

**1.5 100 - 240 V AC, On-off and Floating Control, Class A, B**

Model	Torque		Voltage	Motor Power	Power Consumption	Duty Performance		Running Current	Motor Run Time	SuperCap Return Time
	Nm	in-lb		W	60 / 50 Hz W	Cycles / hour	Starts / hour	60 / 50 Hz Amp	60 / 50 Hz Sec / 90°	Sec / 90°
DM-20	20	177	100 - 120 V AC	17	18 / 18	15 (S3-25%)	120 (S3-25%)	0.31 / 0.31	10 / 10	13
			200 - 240 V AC		20 / 20			0.18 / 0.18	10 / 10	
DM-40	40	354	100 - 120 V AC	17	24 / 23			0.38 / 0.37	20 / 20	28
			200 - 240 V AC		24 / 24			0.22 / 0.22	20 / 20	
DM-60	60	531	100 - 120 V AC	17	23 / 22	0.37 / 0.36	30 / 30	43		
			200 - 240 V AC		23 / 24	0.21 / 0.22	30 / 30			

- The running current is measured at max. torque.

**1.6 100 - 240 V AC, Modulating Control, Class C**

Model	Torque		Voltage	Motor Power	Power Consumption	Duty Performance	Running Current	Motor Run Time	SuperCap Return Time
	Nm	in-lb		W	60 / 50 Hz W	Starts/ hour	60 / 50 Hz Amp	60 / 50 Hz Sec / 90°	Sec / 90°
DM-20	20	177	100 - 120 VAC	17	18 / 18	1200 (S3-25%)	0.31 / 0.31	10 / 10	13
			200 - 240 VAC		20 / 20		0.18 / 0.18	10 / 10	
DM-40	40	354	100 - 120 VAC	17	24 / 23		0.38 / 0.37	20 / 20	28
			200 - 240 VAC		24 / 24		0.22 / 0.22	20 / 20	
DM-60	60	531	100 - 120 VAC	17	23 / 22	0.37 / 0.36	30 / 30	43	
			200 - 240 VAC		23 / 24	0.21 / 0.22	30 / 30		

- The running current is measured at max. torque.

**1.7 24 - 240 V AC / 24 - 135 V DC, On-off and Floating Control, Class A, B**

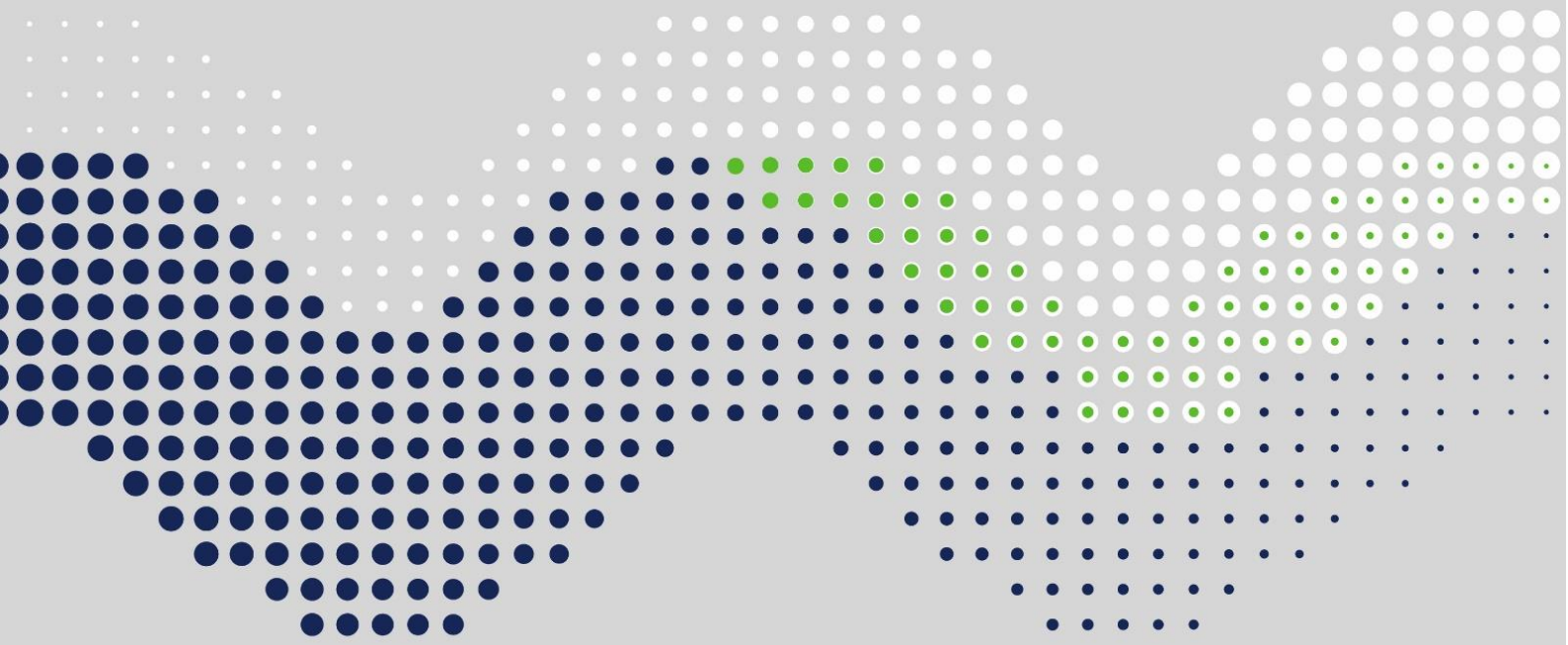
Model	Torque		Voltage	Motor Power	Power Consumption	Duty Performance		Running Current	Motor Run Time	SuperCap Return Time
	Nm	in-lb		W	W	Cycles / hour	Starts / hour	Amp	Sec / 90°	Sec / 90°
DM-20	20	177	24 V AC / DC	17	19 / 19 / 19	15	120	0.79 / 1.06 / 1.07	10 / 10 / 10	13
			135 V DC		21 / - / -			0.15 / - / -	10 / - / -	
			100 - 120 V AC		- / 18 / 18			- / 0.32 / 0.33	- / 10 / 10	
			200 - 240 V AC		- / 21 / 20			- / 0.19 / 0.19	- / 10 / 10	
DM-40	40	354	24 V AC / DC	17	25 / 24 / 24	(S3-25%)	(S3-25%)	1.01 / 1.26 / 1.27	20 / 20 / 20	28
			135 V DC		23 / - / -			0.17 / - / -	20 / - / -	
			100 - 120 V AC		- / 22 / 22			- / 0.36 / 0.36	- / 20 / 20	
			200 - 240 V AC		- / 24 / 23			- / 0.22 / 0.22	- / 20 / 20	
DM-60	60	531	24 V AC / DC	17	24 / 23 / 24			0.98 / 1.21 / 1.23	30 / 30 / 30	43
			135 V DC		23 / - / -			0.17 / - / -	30 / - / -	
			100 - 120 V AC		- / 22 / 22			- / 0.36 / 0.36	- / 30 / 30	
			200 - 240 V AC		- / 24 / 23			- / 0.22 / 0.22	- / 30 / 30	

● The running current is measured at max. torque.

**1.8 24 - 240 V AC / 24 - 135 V DC, Modulating Control, Class C**

Model	Torque		Voltage	Motor Power	Power Consumption	Duty Performance	Running Current	Motor Run Time	SuperCap Return Time	
	Nm	in-lb		W	W	Starts / hour	Amp	Sec / 90°	Sec / 90°	
DM-20	20	177	24 V AC / DC	17	19 / 19 / 19	1200	(S3-25%)	0.79 / 1.06 / 1.07	10 / 10 / 10	13
			135 V DC		21 / - / -			0.15 / - / -	10 / - / -	
			100 - 120 V AC		- / 18 / 18			- / 0.32 / 0.33	- / 10 / 10	
			200 - 240 V AC		- / 21 / 20			- / 0.19 / 0.19	- / 10 / 10	
DM-40	40	354	24 V AC / DC	17	25 / 24 / 24			1.01 / 1.26 / 1.27	20 / 20 / 20	28
			135 V DC		23 / - / -			0.17 / - / -	20 / - / -	
			100 - 120 V AC		- / 22 / 22			- / 0.36 / 0.36	- / 20 / 20	
			200 - 240 V AC		- / 24 / 23			- / 0.22 / 0.22	- / 20 / 20	
DM-60	60	531	24 V AC / DC	17	24 / 23 / 24			0.98 / 1.21 / 1.23	30 / 30 / 30	43
			135 V DC		23 / - / -			0.17 / - / -	30 / - / -	
			100 - 120 V AC		- / 22 / 22			- / 0.36 / 0.36	- / 30 / 30	
			200 - 240 V AC		- / 24 / 23			- / 0.22 / 0.22	- / 30 / 30	

● The running current is measured at max. torque.



**SUNYEH**

SUN YEH ELECTRICAL IND. CO., LTD.

No.68, Ln. 854, Sec. 1, Shatian Rd., Dadu Dist.,  
Taichung City 432, Taiwan  
Tel: +886-4-26985666 Fax: +886-4-26983668  
E-mail: service@sunyeh.com

[www.sunyeh.com](http://www.sunyeh.com)

