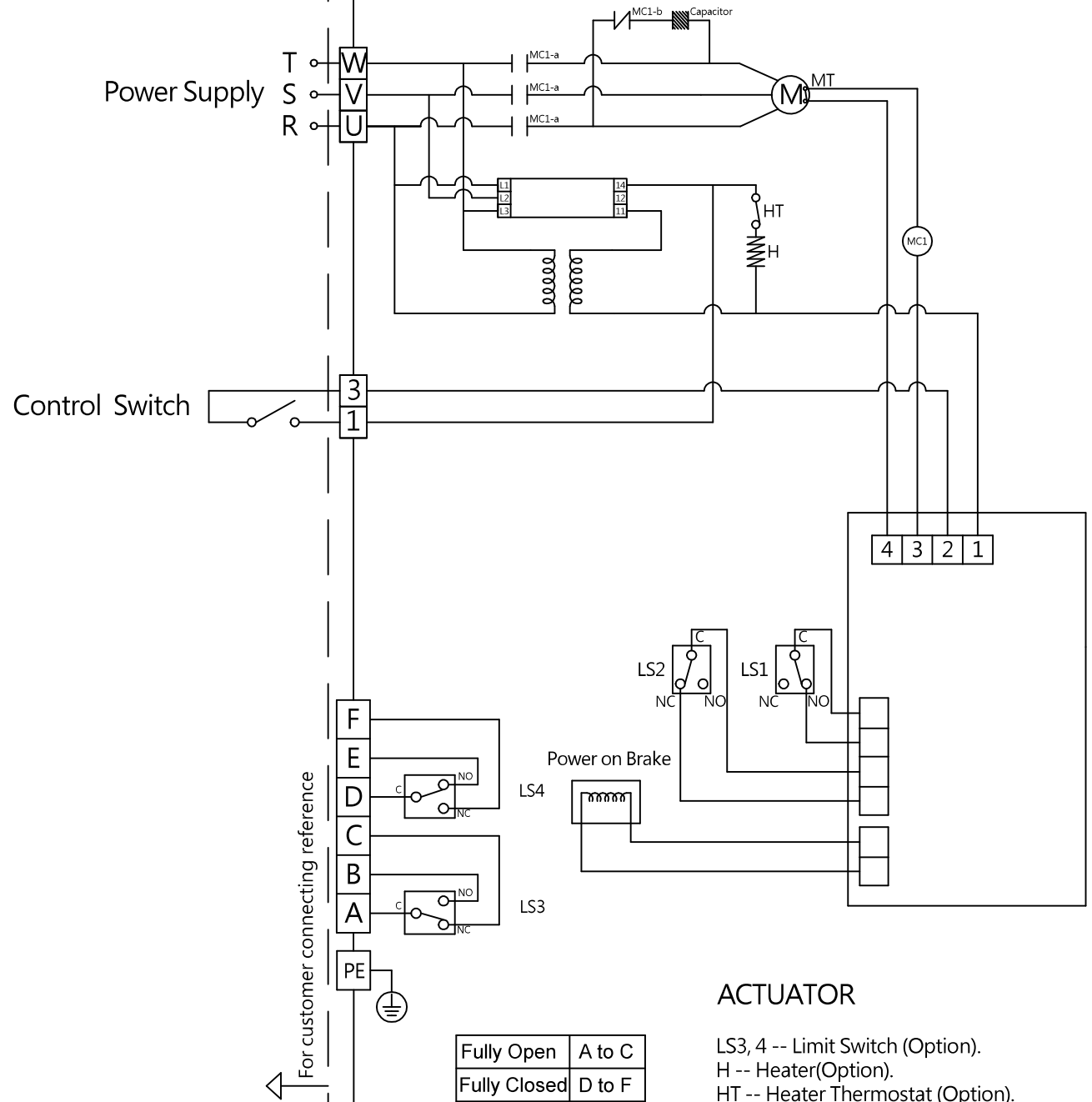


Note:

- (1). You may change any two phases of R S T, when the Phase reversal relay RY lamp is off.
- (2). Remote command option.
  1. When terminal 1 is connected to terminal 3, the motor drives the actuator to the limiting position.
  2. When terminal 1 is not connected to terminal 3, the spring drives the actuator back to the limiting position.
  3. The drive direction can either be CW or CCW. Please refer to the product specification.
- (3). The terminal block "A B C D E F" needs to use resistive load and should not exceed 5A at 250VAC.



Wiring Diagram NO: 02-007-20-03-01-02-3-001

Rev	1.0	Signature	Date	S500 · S1300 · S2000 · S2600
Designed				Power Supply : 380~415VAC 3-Phase
Drawn	Ming Hung	2020/12/09		ON/OFF Control
Checked	Ming Hung	2020/12/09		50% Duty Cycle
Approved				



SUN YEH ELECTRICAL IND. CO., LTD.  
 TEL: +886-4-2698-5666  
 FAX: +886-4-2698-1188