



Electric
Valve
Actuators

S / L / OM / T / M SERIES

- Spring Return Fail-safe - Linear - Quarter-turn - Multi-turn



Sun Yeh Electrical Ind. Co., Ltd. was established in 1986 and it is committed to continuous technical innovation, the most advanced product quality management, organizational excellence, and outstanding customer satisfaction.

Our sustainable development drives the product line extension to include quarter-turn actuators, spring return fail-safe actuators, linear actuators, multi-turn actuators and explosion-proof actuators. Sun Yeh offers various products that can be widely applied to the control of industrial processes, fluid control, water treatment, HVAC, chemical engineering, food processing, tunnel ventilation and so on.



「Perfect solution」



Sun Yeh is dedicated to providing you with high-quality products, which have been certified with CE, CSA, CCC, ATEX, IECEx, and CNEx approvals, as well as meet RoHS, REACH and China RoHS environmental regulations, in addition to ISO 9001, ISO 14001, ISO 45001, and AEO.



RoHS Compliance



Quarter Turn Electric Valve Actuators **OM** SERIES



OM SERIES



T SERIES

Product Overview

OM & T series quarter-turn electric actuators provide torque ranges from 6 N·m to 4,500 N·m (53 in·lb to 40,000 in·lb). All models are equipped with a visual position indicator, except T-6 and T-15. The key feature of actuator is its non-clutch design (except T-6 and T-15), the manual operation (except OM-A & BM-2) can be operated without brake and clutch upon power cut. This could increase the mechanical reliability.

Standard Specification

Model	Torque		Weight		Nominal Motor Power	Speed	Manual Override	Flange Type
	N·m	in·lb	kg	lb	Watt	(sec. / 90°)		ISO 5211
T-6	6	53	1.5	3.3	5	8	Lever	F03 / F05
T-15	15	132	1.5	3.3	5	19		F03 / F05
OM-1	35	310	2	4.4	10	12	N / A	F03 / F05
OM-A	50	445	3	6.6	10	27	Lever	F05 / F07
OM-AM	50	445	3	6.6	10	27		F05 / F07
OM-J	80	708	3	6.7	5	130	Handwheel	F05 / F07
OM-F	65	575	11	25	60	6		F07 / F10
OM-2	90	800	11	25	40	17	N / A	F07 / F10
BM-2	120	1065	5.5	13	40	9		F07
OM-G	120	1065	11	25	60	8	Handwheel	F07 / F10
OM-3	150	1330	11	25	40	26		F07 / F10
OM-H	300	2655	17	38	60	24	Handwheel	F07 / F10
OM-4	400	3540	20	45	80	19		F10 / F12
OM-5	500	4430	20	45	80	26	Handwheel	F10 / F12
OM-6	650	5755	20	45	80	34		F10 / F12
OM-7	1000	8855	32	71	120	50	Handwheel	F12 or F14
OM-8	1500	13280	32	71	120	51		F12 or F14
OM-9	2000	17710	71	157	180	62	Handwheel	F14 or F16
OM-10	2500	22140	71	157	180	62		F14 or F16
OM-11	3000	26565	72	159	180	62	Handwheel	F14 or F16
OM-12	3500	31000	72	159	220	62		F14 or F16
OM-13	4500	40000	106	234	220	88	Handwheel	F16 / F25

• Motor power and speed data are based on 110VAC @60Hz, 30% duty cycle, floating control.

Product Features

- Self-locking gear system.
- Dry-powder coated aluminum alloy enclosure conforms to C3, NEMA 4X, 5 & IP67 outdoor use.
- ISO 5211 mounting flange.
- Mechanical stops.
(except T-6 / 15, OM-1 / A / AM / J/BM-2)
- Domed position indicator.
(except T-6 / 15 & BM-2)
- Built-in motor thermal protection.

Explosion-proof Enclosure



OME SERIES

ATEX Certification

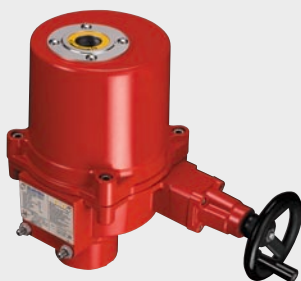
Directive	Group	Ambient Temperature
ATEX II 2 GD	Ex db IIB T4 Gb	-30°C to +70°C (-22°F to +158°F)
ATEX II 2 GD	Ex tb IIIC T130°C Db	-30°C to +70°C (-22°F to +158°F)

IECEx International Certification

Group	Ambient Temperature
Ex db IIB T4 Gb	-30°C to +70°C (-22°F to +158°F)
Ex tb IIIC T130°C Db	-30°C to +70°C (-22°F to +158°F)

CSA Hazardous Area Certification

System	Group	Ambient Temperature
Zone	Ex db IIB T4 Gb Class I, Zone 1, AEx db IIB T4 Gb Ex tb IIIC T130°C Db Zone 21, AEx tb IIIC T130°C Db	-30°C to +70°C (-22°F to +158°F)
Division	Class I, Division 1, Groups C, D T4 Class II, Division 1, Groups E, F, G T130°C	-30°C to +70°C (-22°F to +158°F)



OME series explosion-proof quarter-turn electric actuator is structured as flame-proof and combustible dust-proof. It is a control device for valves and can be used in the places, where is classified as Zone 1 or Zone 2, contained Group IIA and Group IIB gases, Zone 21 or Zone 22, contained the combustible dust atmosphere or the mixture circumstance with the explosive gas atmospheres and the combustible dust atmospheres. Temperature group T1 to T4.

Multi-turn Electric Actuators

Product Overview

Sun Yeh M series multi-turn electric actuators are designed to provide output torque from 41 N·m to 100 N·m and output speed from 15 rpm to 120 rpm which fit with various types of valves. Come with a gearbox, the maximum output torque increases. In addition, the backlit LCD display and reed switches make the operation smoothly under different lighting conditions. The manual override allows for fast and simple manual positioning of valves. The manual override switch is simply toggled to engage the override system and disconnect the electrical control of the actuator.



Product Features

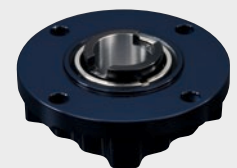
- The output torque remains constant when output speed changes.
- High efficiency BLDC motor technology allows output torque and speed adjustable for operation in both directions.
- Overload protection prevents from damages.
- Double-sealed structure prevents moisture ingress into control compartment.
- Patent obtained in USA, Germany, UK, Taiwan, Japan, and China.
- Bluetooth supported for optimize operation and data history log through APP.
- A variety of communication protocols supported including Profibus, Modbus, and HART.
- The ambient temperature of the motor and the drivers is detectable.
- Non-intrusive design allows parameters to be set without access to the inside of the actuator.
- Multi-language LCD display incorporated with reed switches allows for easy and simple operation.
- Automatic phase correction and adjustment as well as phase lost protection alarm.
- Instant reversal protection.
- Settings are hierarchical password protected to enforce security.



·Non-rising Stem



·Rising Stem



·Non-rising Stem



·Rising Stem

Technical Data

Model	Output Speed	Non-rising Stem				Rising Stem				Mounting Flange			
		Max Torque		Max Stem Acceptance Diameter	Weight		Max Thrust		Max Stem Acceptance Diameter		Weight		
	rpm	N·m	in·lb		mm	kg	lb	kgf			lbf	kN	mm
M-41	40 - 120	41	363	35	52	115	4080	8996	40	28	55	121.5	F10
M-55	30 - 90	55	487										
M-80	20 - 60	80	708										
M-100	15 - 45	100	885										

S

SERIES Product Features

- Controls: On / Off, floating (optional), modulating (optional).
- Manual override (optional).
- Dry-powder coated aluminum alloy enclosure conforms to C3, NEMA 4X, 5 & IP68 outdoor use.
- ISO 5211 mounting flange.
- Domed position indicator.
- Built-in motor thermal protection.



M SERIES

Multi-turn Gearboxes

G201 Multi-turn Gearbox													
Model	Output Speed	Non-rising Stem					Rising Stem					Mounting Flange	
		Max Torque		Max Stem Acceptance Diameter	Weight		Max Thrust			Max Stem Acceptance Diameter	Weight		
		rpm	N·m	in·lb	mm	kg	lb	kgf	lbf	kN	mm		kg
M-41	13 - 40	123	1090	40	22	48.5	7140	15744	70	32	25	55.1	F12
M-55	10 - 30	165	1460		25	55.1	10200	22491	100		27.5	60.6	
M-80	7 - 20	240	2125		32	70.3	15300	33737	150		36	79.4	

G202 Multi-turn Gearbox													
Model	Output Speed	Non-rising Stem					Rising Stem					Mounting Flange	
		Max Torque		Max Stem Acceptance Diameter	Weight		Max Thrust			Max Stem Acceptance Diameter	Weight		
		rpm	N·m	in·lb	mm	kg	lb	kgf	lbf	kN	mm		kg
M-41	8 - 24	205	1815	45	25	55.1	10200	22491	100	36	27.5	60.6	F14
M-55	6 - 18	275	2435		32	70.3	15300	33737	150		36	79.4	
M-80	4 - 12	400	3540		40	88.2	19200	42674	180		44	97.2	

G203 Multi-turn Gearbox													
Model	Output Speed	Non-rising Stem					Rising Stem					Mounting Flange	
		Max Torque		Max Stem Acceptance Diameter	Weight		Max Thrust			Max Stem Acceptance Diameter	Weight		
		rpm	N·m	in·lb	mm	kg	lb	kgf	lbf	kN	mm		kg
M-55	4.3 - 13	385	3410	60	32.5	71.6	15300	33737	150	44	36	79.4	F16
M-80	2.8 - 8.6	560	4960		40	88.2	19200	42674	180		44	97.2	
M-100	2.1 - 6.4	700	6200		50	110.2	24000	53381	225		55	121.2	



SE SERIES





Spring Return Fail-safe Electric Valve Actuators

Product Overview

S series spring return fail-safe electric actuators cover a torque range from 50 N·m to 360 N·m (445 in·lb to 3185 in·lb). This series in addition to the normal function (floating control, On / Off control and modulating control) is designed for fail-safe positioning of valves and dampers upon loss of supply voltage. A mechanical spring set is utilized to position the controlled device to either the fully OPEN or fully CLOSED position without any external power source. For On / Off type actuator, a mechanical BUFFER is employed at the end of the spring stroke in order to reduce the dynamic effects of the spring return system. Manual override is optional for manual positioning of the controlled device.

Standard Specification

Model	Torque		Motor Power	Weight				Mounting Flange	Shaft		Depth of Shaft	
	N·m	in·lb		Standard		W / Manual Override			mm	inch	mm	inch
			kg	lb	kg	lb						
S-500	50	445	50	27	59	37	81	F07	17	0.669	30	1.181
S-1300	130	1150	130	57.5	127	74.5	164	F10	22	0.866	41	1.614
S-2000	200	1770	130	95	209	135	297	F12	27	1.063	45	1.772
S-2600	260	2300	130	95	209	135	297	F12	27	1.063	45	1.772
S-3600	360	3185	130	108	238	156	344	F12	36	1.417	46	1.811

• Motor power is based on 110VAC @60Hz, 50% duty cycle, On / Off control.

Explosion-proof Enclosure



with manual override without manual override

SE series explosion-proof spring return fail-safe actuator is structured as flame-proof and combustible dust-proof. The torque range is from 50 N·m to 260N·m (445 in·lb to 2300 in·lb). It is a control device for valves or dampers and can be used in the places, where is classified as Zone 1 or Zone 2, contained Group IIA and Group IIB gases, Zone 21 or Zone 22, contained the combustible dust atmosphere or the mixture circumstance with the explosive gas atmospheres and the combustible dust atmospheres. Temperature group T1 to T4.

ATEX Certification

Directive	Group	Ambient Temperature
ATEX II 2 GD	Ex db IIB T4 Gb	-30°C to +70°C (-22°F to +158°F)
ATEX II 2 GD	Ex tb IIIC T130°C Db	-30°C to +70°C (-22°F to +158°F)

IECEx International Certification

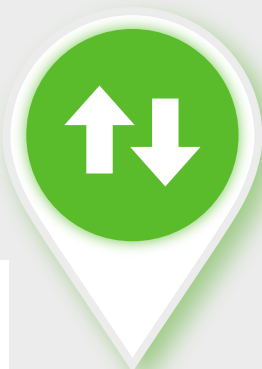
Group	Ambient Temperature
Ex db IIB T4 Gb	-30°C to +70°C (-22°F to +158°F)
Ex tb IIIC T130°C Db	-30°C to +70°C (-22°F to +158°F)

CSA Hazardous Area Certification

System	Group	Ambient Temperature
Zone	Ex db IIB T4 Gb	-30°C to +70°C (-22°F to +158°F)
	Class I, Zone 1, AEx db IIB T4 Gb Ex tb IIIC T130°C Db Zone 21, AEx tb IIIC T130°C Db	
Division	Class I, Division 1, Groups C, D T4 Class II, Division 1, Groups E, F, G T130°C	-30°C to +70°C (-22°F to +158°F)



L SERIES



Linear Electric Valve Actuators

Product Overview

L series linear electric actuators provide thrust ranges from 250 to 2,000 kgf (550 to 4410 lbf). All models are equipped with modulating controllers and are suitable for globe valves, gate valves and linear travel devices. They can be applied to HVAC and industrial processes, especially for steam and high temperature employments.

Product Features

- Self-locking drive system.
- DC motor equipped.
- External stem position indicator.
- Low-power consumption.
- Dry-powder coated aluminum alloy enclosure conforms to C3, NEMA 4X, 5 & IP67 outdoor use.
- Manual operation can be applied in case of power outage.
- Built-in motor thermal protection.

Standard Specification

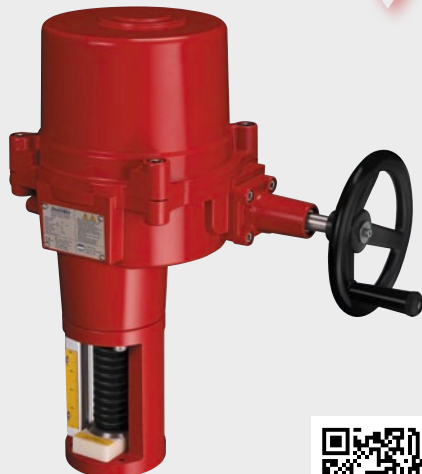
Model	Thrust			Weight		Nominal Motor Power	Flange Type	Max. Stroke	
	kgf	lbf	N	kg	lb	Watt	ISO 5210	mm	inch
L-250	250	550	2450	9.5	21	15	F07	50	2
L-500	500	1100	4900	9.5	21	15	F07	50	2
L-1000	1000	2205	9805	31	68	25	F10	100	4
L-2000	2000	4410	19615	31	68	35	F10	100	4

• Motor power is based on 110VAC @60Hz.



LE SERIES

LE series explosion-proof linear actuator is structured as flame-proof and combustible dust-proof. It is a control device for valves and can be used in the places, where is classified as Zone 1 or Zone 2, contained Group IIA and Group IIB gases, Zone 21 or Zone 22, contained the combustible dust atmosphere or the mixture circumstance with the explosive gas atmospheres and the combustible dust atmospheres. Temperature group T1 to T4.



ATEX Certification

Directive	Group	Ambient Temperature
ATEX II 2 GD	Ex db IIB T4 Gb	-30°C to +70°C (-22°F to +158°F)
ATEX II 2 GD	Ex tb IIIC T130°C Db	-30°C to +70°C (-22°F to +158°F)

IECEX International Certification

Group	Ambient Temperature
Ex db IIB T4 Gb	-30°C to +70°C (-22°F to +158°F)
Ex tb IIIC T130°C Db	-30°C to +70°C (-22°F to +158°F)



L SERIES

M SERIES

NE STOP
SERVICE

S SERIES

OM SERIES

Service Unique Nice Youthful Energy Honesty
SUNYEH

SUN YEH ELECTRICAL IND. CO., LTD.

No.68, Ln. 854, Sec. 1, Shatian Rd., Dadu Dist.,
Taichung City 432004, Taiwan (R.O.C.)
Tel: +886-4-26985666 Fax: +886-4-26983668
E-mail: service@sunye.com
www.sunyeh.com

